

How to import your Profile in the Intel PROSet/Wireless Client

Introduction

This instruction describes how to import preconfigured profiles under Windows XP with the Intel PROSet/Wireless Client. In the following the import of the DESY profile will be described.. The preconfigured profile of DESY or eduroam can be found at the end of this page at **www.it.desy.de** → **Services** → **Netorks** → **WLAN** → **WLAN – Instruction**. Download the required profile and save it somewhere in any folder.

If Intel PROSet/Wireless has to be installed, download the software from the S-drive. See S:\services\Driver\Dell\Intel\WLAN\2200BG-5300\Info.txt → „Intel PROSet/Wireless WiFi Connection Software (Version x.y) + Drivers”.

Note:

With older versions of Intel PROSet/Wireless the import fails. In this case an updated version has to be installed. See S-drive (S:\services\Driver\Dell\Intel\WLAN\2200BG-5300\Info.txt → „Intel PROSet/Wireless WiFi Connection Software (Version x.y) + Drivers”).

Importing the Profile

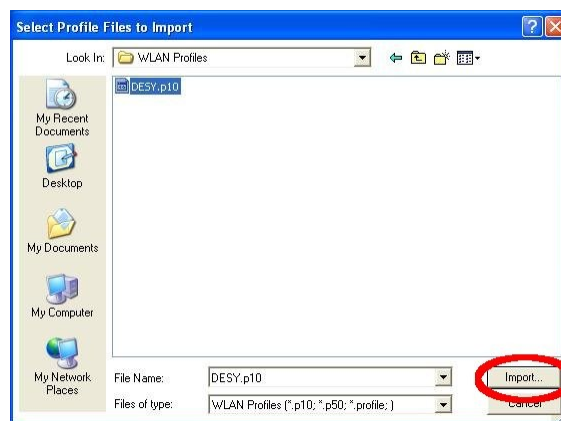
By **double click** on the Intel PROSet/Wireless symbol in the task bar (next to the clock) you can open the WLAN management. Here click on „**Profiles...**”.



In the new window go to „Import...“.



Choose the profile to be imported. Confirm your selection with „Import...“.



A pop-up window informs you that the selected profiles have been imported successfully. Please confirm with „OK“.

Repeat these steps until all required profiles have been imported.



Performance Check

After importing the profiles, we would recommend to establish a test connection with each of the imported profile.

Note:

Please make sure at the beginning that your Wireless network card is enabled. The procedure for this is different for each device. Support on this topic can be taken from the manual of your notebook.

The Intel PROSet/Wireless Client has to be activated for the WLAN management. This is the case if the Intel PROSet/Wireless Symbol in the taskbar (next to the clock) is colored. If this is not the case, click with the right mouse button on the transparent symbol and then in the context menu on „**Open Wireless Zero Configuration**“ or „**Enable WiFi Control**“ (depending on the software version).

Intel PROSet/Wireless is deactivated:



Intel PROSet/Wireless ist activated:



If you connect with DESY or eduroam for the first time, you have to indicate your user name and your WLAN password. Please note that the field Domain must be left **empty**.

Connecting to DESY ...

This profile was recently imported and does not contain any credentials.
Please enter your credentials below.

☒ Roaming Identity anonymous@desy.de

Use the following user name and password:

User Name: UserID@desy.de
Domain:
Password: xxxxxxxx

Help? OK Cancel

Shortly after, the following message should be displayed. Now you are connected to the DESY WLAN.



If you should have any questions or suggestions, please contact the UCO by phone at 5005, or by E-mail to uco@desy.de.